



Réunion Scientifique et Assemblée Générale Annuelle
Annual Scientific Meeting and General Assembly

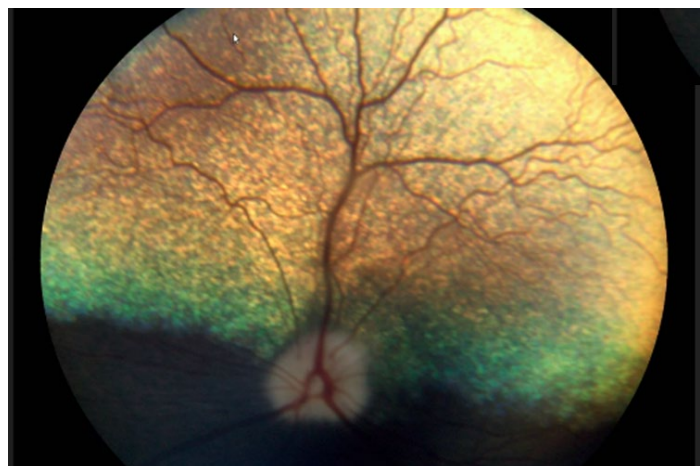
Johnson & Johnson, Building Leonardo, Diegem, Belgium
28 – 29 May 2026

**Eyes wide open: current and future insights
into ocular toxicology & pathology**

Local Contact:

An De Doncker

*Management Assistant,
Pathobiology
DPDS - Preclinical Sciences and
Translational Safety (PSTS)
J&J Innovative Medicine
T: +32 14 60 7395
addoncke@its.jnj.com*



Program of the student session (residents only)

Thursday 28th May 2026, morning (9:30 – 12:00)
Meeting room 058

Half-day course on toxicologic pathology for residents in veterinary anatomic pathology (DESV en anatomie pathologique)

9:30-10:30	Roles of the Veterinary Pathologist in R&D Catherine Botteron (ERBC, France) & Cecile Sobry (Servier)
10:30-11:00	Coffee Break
11:00-12:00	Pathology of Laboratory Animals and Animal Models of Medical Research Josep Monne (Roche)

Program of the annual scientific meeting

Thursday 28th May 2026, afternoon – (in English)
Meeting room 183

11:45-12:45	Lunch
12:45-13:00	Welcome and Introduction Erio Barale-Thomas (SOC/LOC)
13:00-14:00	Ocular Toxicity in Preclinical Studies: Challenges and Regulatory Expectations, <i>in-vivo</i> Assessment Techniques. Sylvie Wise (CRL, Canada)
14:00-15:00	Precision matters: Sampling and Processing of the Eyes and Adnexae for Ocular Toxicology. Typhaine Lejeune (CRL, Canada)
15:00-15:30	Coffee Break
15:30-16:30	Preclinical Safety Assessment of Ocular Medical Devices: A Pathologist's Perspective on Current Practices and Future Directions Stephanie Shrader (Shrader Consulting)

16:30-17:15	Innovative Approaches for Ocular Safety Assessment: Enhancing Complexity and Reproducibility in Retinal Organoids. <i>Jyoti Rao (Institute of Human Biology, Roche, Basel)</i>
17:30-19:00	SFPT Annual General Assembly
20:00	Friendly dinner at Brasserie Mariadal

Friday 29th May 2025, morning – (in English) Meeting room 183	
9:00-9:15	Welcome and Introduction <i>Erio Barale-Thomas (SOC/LOC)</i>
9:15-10:15	Development and Pathology of AAV-based Ocular Gene Therapies. <i>Helen Booler (Novartis)</i>
10:15-10:45	Case Study: Focus Despite Rupture: Maintaining Study Validity After IVT Injection Complications in NHP. <i>Theresa Brömel (Roche)</i>
10:45-11:15	Coffee Break
11:15-11:45	Don't Forget the Brain! Ocular Gene Therapy Case Studies. <i>Typhaine Lejeune (CRL, Canada)</i>
11:45-12:15	Case Study: Subretinal injections. <i>Helen Booler (Novartis)</i>
12:15-12:30	Conclusions and Farewell by the SFPT president <i>Céline Thuilliez (ERBC)</i>
12:30-13:30	Lunch

How to register

Before the 15th May 2026, on the SFPT website:

[Congrès | Société Française de Pathologie Toxicologique](#)

All participants, including sponsors, speakers and residents, need to register.

Registration fees

Registration fees include lunches and coffee breaks. Residents in pathology will be exempt from registration fees and will have the dinner supported by the SFPT.

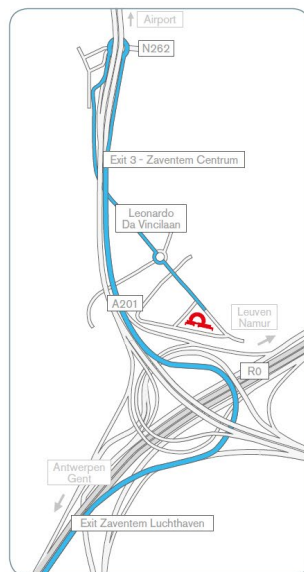
	Meeting	Dinner (optional)	Total
Residents in pathology	-	-	-
SFPT members	80	70	150
Non-members	120	70	190

Site Access

Main access:

Johnson & Johnson
Leonardo Building
Leonardo Da Vincilaan 15
1831 Diegem
-The reception is open from 7 am till 5:45 pm-

Google map link [Here](#)



Getting to J&J Brussels offices (By car)

From N/W - Antwerp

1. Take the E19 highway south towards Brussels
2. In Machelen, keep left and take the R0 (Brussels Ring) towards Namen/Luik/Leuven/Brussel/Luchthaven
3. Take the Zaventem exit and keep left towards Luchthaven Zaventem on the A201
4. Take Exit 3 Zaventem Centrum to the A262 and head towards Da Vinci/Luchthaven General Aviation
5. At the roundabout, take the first exit onto Vilvoordelaan (N262)
6. At the next roundabout, turn left onto Leonardo Da Vincilaan
7. At the next roundabout, go straight onto Leonardo Da Vincilaan
8. Our offices are located on the right-hand side

From N/W - Ghent

1. Take the E40 highway east towards Brussels
2. Keep right in Groot Bijgaarden and take the R0 (Brussels Ring) towards Namen/Luik/Antwerpen/Zaventem/Luchthaven
3. From here on you can follow the same directions as from step 3 in the description coming from Antwerp.

Recommended: public transportation

By flight:

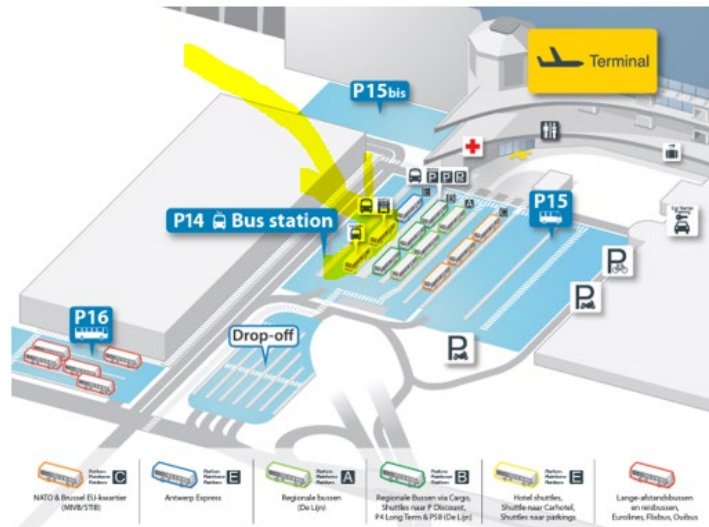
Diegem (located northeast of Brussels) is close to Brussels airport.

There is a Crowne Plaza shuttle service from and to Brussels Airport

J&J employees and visitors can take the Crowne Plaza hotel shuttle bus - free of charge.
Location: Zaventem airport - level 0 - outside where all shuttle buses park (yellow zone - to the right upon exiting the building)

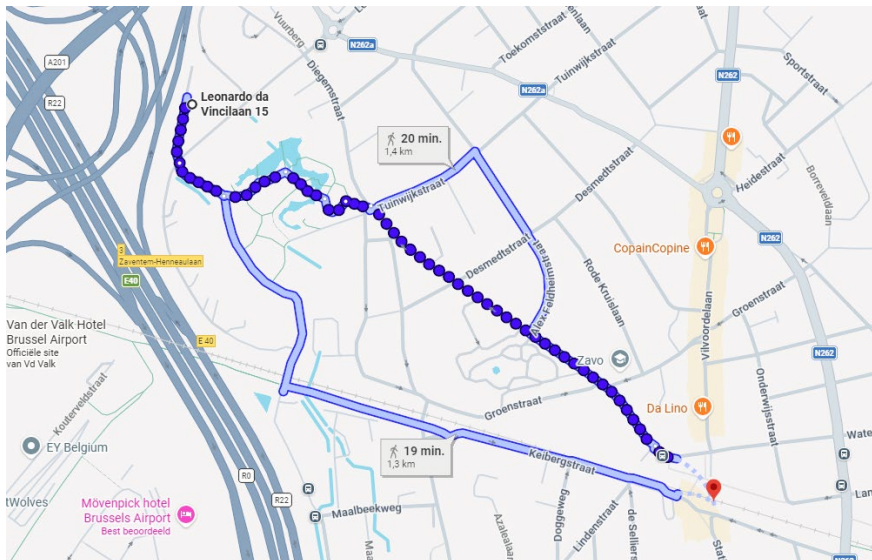
Frequency: ask the reception desk for a timetable - shuttle bus drives everyday (Mon-Fri) between 6 AM and 11 PM - every 30 min.

Diegem: Shuttle bus stops at the Crowne Plaza Hotel parking (opposite of Leonardo Building).



Coming by train:

The ride from Brussels-Central to Zaventem train station is about 15 minutes.
The Zaventem train station is about 20-minute walk from the J&J site.
Several De Lijn buses stop near Zaventem Centrum / Station and go toward the J&J site.



Reception

For visitors, the reception staff will issue a badge (to be given back at the end of each day) in exchange for the deposit of a valid identity document, such as a national identity card, a passport, or a driver's license.

Restaurant

Brasserie Mariadal (about 3,5 km – 33-minute walk or 15-20 minutes ride by bus from the Leonardo Building)
Kouterweg 2, 1930 Zaventem

[Brasserie Mariadal - Zaventem - Belgian & French gastronomy](#)



Some hotel suggestions

CAUTION: Remember to book as soon as possible.

The Crowne Plaza Brussels Airport Hotel is located near the Diegem J&J Site (accessible by foot, across the street). We have reserved a block of rooms at negotiated rates for the congress participants: [Website booking link](#).

Hotels in the city center: The city center is 14 km away from the Diegem J&J site, so with traffic, this takes about 40 minutes by car or 17 min walk to the Zaventem train station and then 15 minutes by train to Brussel-Centraal.

Diegem	Crowne Plaza Brussels Airport	Da Vincilaan 4, 1831 Diegem	Website
	Pentahotel Brussels Airport	Berkenlaan 5, 1831 Diegem	Website
	Holiday Inn Express Brussels – Airport	Berkenlaan 6A, 1831 Diegem	Website
Brussels	Hilton Brussels Grand Place	Carrefour de l'Europe 3	Website