



**Réunion Scientifique et Assemblée Générale Annuelle**  
***Annual Scientific Meeting and General Assembly***

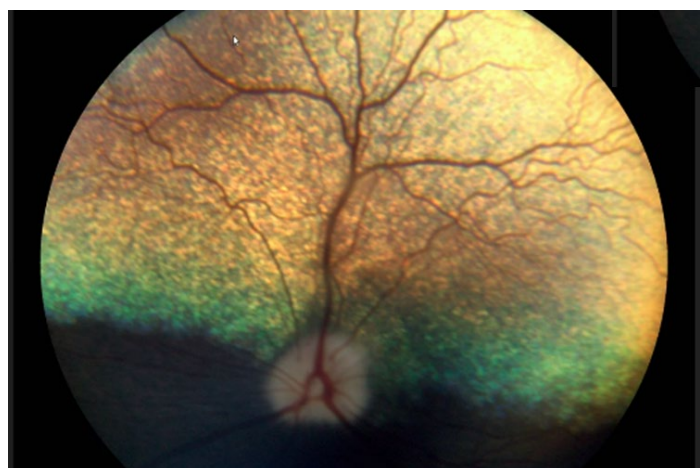
***Johnson & Johnson, Building Leonardo, Diegem, Belgium***  
***28 – 29 May 2026***

**Eyes wide open: current and future insights  
into ocular toxicology & pathology**

**Local Contact:**

**An De Doncker**

*Management Assistant,  
Pathobiology  
DPDS - Preclinical Sciences and  
Translational Safety (PSTS)  
J&J Innovative Medicine  
T: +32 14 60 7395  
[addoncke@its.jnj.com](mailto:addoncke@its.jnj.com)*



**Program of the student session (in French, residents only)**

**Thursday 28<sup>th</sup> May 2026, morning (8:15-11:45)**  
**Meeting room 058**

*Half-day course on toxicologic pathology for residents in veterinary anatomic pathology (DESV en anatomie pathologique)*

**Program of the annual scientific meeting**

**Thursday 28<sup>th</sup> May 2026, afternoon – (in English)**  
Meeting room 183

<b>11:45-12:45</b>	<b>Lunch</b>
<b>12:45-13:00</b>	<b>Welcome and Introduction</b> Erio Barale-Thomas (SOC/LOC)
<b>13:00-14:00</b>	<b>Ocular Toxicity in Preclinical Studies: Challenges and Regulatory Expectations, <i>in-vivo</i> Assessment Techniques.</b> Sylvie Wise (CRL, Canada)
<b>14:00-15:00</b>	<b>Precision matters: Sampling and Processing of the Eyes and Adnexae for Ocular Toxicology.</b> Typhaine Lejeune (CRL, Canada)
<b>15:00-15:30</b>	<b>Coffee Break</b>
<b>15:30-16:30</b>	<b>Preclinical Safety Assessment of Ocular Medical Devices: A Pathologist's Perspective on Current Practices and Future Directions</b> Stephanie Shrader (StageBio, USA)
<b>16:30-17:15</b>	<b>Innovative Approaches for Ocular Safety Assessment: Enhancing Complexity and Reproducibility in Retinal Organoids.</b> Jyoti Rao (Institute of Human Biology, Basel)
<b>17:30-19:00</b>	<b>SFPT Annual General Assembly</b>
<b>20:00</b>	<b>Friendly dinner at Brasserie Mariadal</b>

**Friday 29th May 2025, morning – (in English)**  
Meeting room 183

<b>9:00-9:15</b>	<b>Welcome and Introduction</b> Erio Barale-Thomas (SOC/LOC)
<b>9:15-10:15</b>	<b>Development and Pathology of AAV-based Ocular Gene Therapies.</b> Helen Booler (Novartis)
<b>10:15-10:45</b>	<b>Case Study: Focus Despite Rupture: Maintaining Study Validity After IVT Injection Complications in NHP.</b> Theresa Brömel (Roche)
<b>10:45-11:15</b>	<b>Coffee Break</b>
<b>11:15-11:45</b>	<b>Don't Forget the Brain! Ocular Gene Therapy Case Studies.</b> Typhaine Lejeune (CRL, Canada)
<b>11:45-12:15</b>	<b>Case Study: Subretinal injections.</b> Helen Booler (Novartis)
<b>12:15-12:30</b>	<b>Conclusions and Farewell by the SFPT president</b> Céline Thuilliez (ERBC)
<b>12:30-13:30</b>	<b>Lunch</b>

**How to register**

**Before the 15<sup>th</sup> May 2026, on the SFPT website:**

**[Congrès | Société Française de Pathologie Toxicologique](#)**

All participants, including sponsors, speakers and residents, need to register.

**Registration fees**

Registration fees include lunches and coffee breaks. Residents in pathology will be exempt from registration fees and will have the dinner supported by the SFPT.

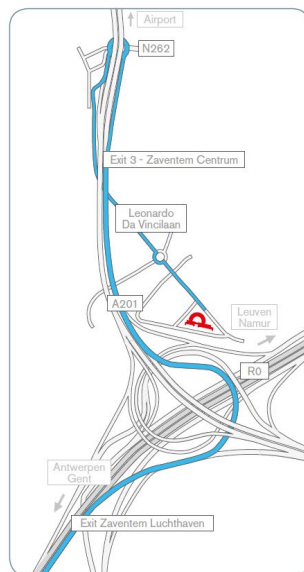
	<b>Meeting</b>	<b>Dinner (optional)</b>	<b>Total</b>
Residents in pathology	-	-	-
SFPT members	80	70	150
Non-members	120	70	190

## Site Access

### Main access:

Johnson & Johnson  
Leonardo Building  
Leonardo Da Vincilaan 15  
1831 Diegem  
-The reception is open from 7 am till 5:45 pm-

Google map link [Here](#)



### Getting to J&J Brussels offices (By car)

#### From N/W - Antwerp

1. Take the E19 highway south towards Brussels
2. In Machelen, keep left and take the R0 (Brussels Ring) towards Namen/Luik/Leuven/Brussel/Luchthaven
3. Take the Zaventem exit and keep left towards Luchthaven Zaventem on the A201
4. Take Exit 3 Zaventem Centrum to the A262 and head towards Da Vinci/Luchthaven General Aviation
5. At the roundabout, take the first exit onto Vilvoordelaan (N262)
6. At the next roundabout, turn left onto Leonardo Da Vincilaan
7. At the next roundabout, go straight onto Leonardo Da Vincilaan
8. Our offices are located on the right-hand side

#### From N/W - Ghent

1. Take the E40 highway east towards Brussels
2. Keep right in Groot Bijgaarden and take the R0 (Brussels Ring) towards Namen/Luik/Antwerpen/Zaventem/Luchthaven
3. From here on you can follow the same directions as from step 3 in the description coming from Antwerp.

### Recommended: public transportation

#### By flight:

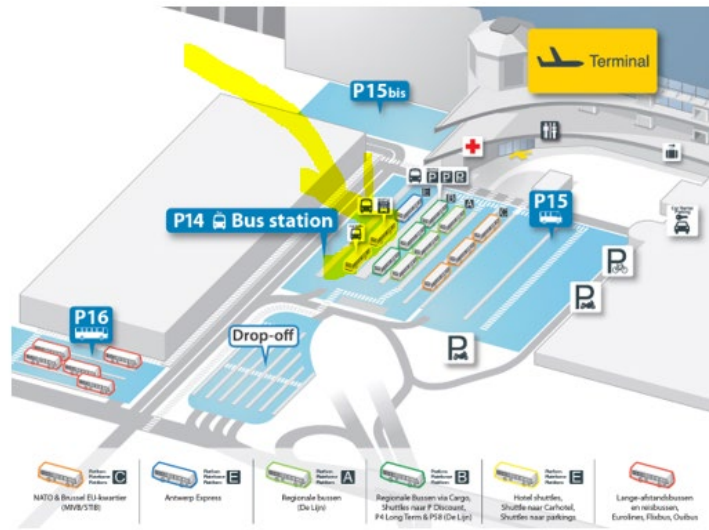
Diegem (located northeast of Brussels) is close to Brussels airport.

There is a Crowne Plaza shuttle service from and to Brussels Airport

J&J employees and visitors can take the Crowne Plaza hotel shuttle bus - free of charge.  
Location: Zaventem airport - level 0 - outside where all shuttle buses park (yellow zone - to the right upon exiting the building)

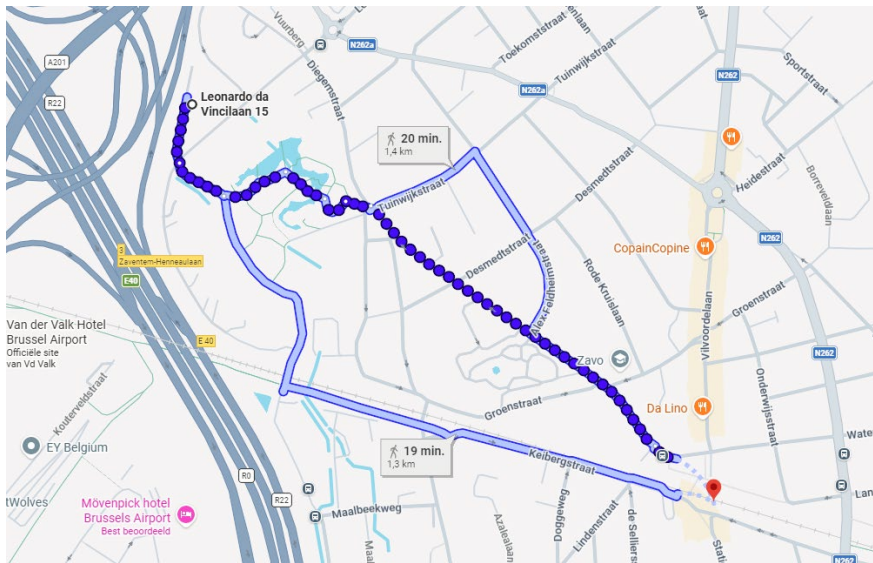
Frequency: ask the reception desk for a timetable - shuttle bus drives everyday (Mon-Fri) between 6 AM and 11 PM - every 30 min.

Diegem: Shuttle bus stops at the Crowne Plaza Hotel parking (opposite of Leonardo Building).



**Coming by train:**

The ride from Brussels-Central to Zaventem train station is about 15 minutes.  
 The Zaventem train station is about 20-minute walk from the J&J site.  
 Several De Lijn buses stop near Zaventem Centrum / Station and go toward the J&J site.



**Reception**

For visitors, the reception staff will issue a badge (to be given back at the end of each day) in exchange for the deposit of a valid identity document, such as a national identity card, a passport, or a driver's license.

## Restaurant

**Brasserie Mariadal** (about 3,5 km – 33-minute walk or 15-20 minutes ride by bus from the Leonardo Building)  
Kouterweg 2, 1930 Zaventem

[Brasserie Mariadal - Zaventem - Belgian & French gastronomy](#)



## Some hotel suggestions

**CAUTION: Remember to book as soon as possible.**

**The Crowne Plaza Brussels Airport Hotel** is located near the Diegem J&J Site (accessible by foot, across the street). We have reserved a block of rooms at negotiated rates for the congress participants: [Website booking link](#).

**Hotels in the city center:** The city center is 14 km away from the Diegem J&J site, so with traffic, this takes about 40 minutes by car or 17 min walk to the Zaventem train station and then 15 minutes by train to Brussel-Centraal.

Diegem	Crowne Plaza Brussels Airport	Da Vincilaan 4, 1831 Diegem	<a href="#">Website</a>
	Pentahotel Brussels Airport	Berkenlaan 5, 1831 Diegem	<a href="#">Website</a>
	Holiday Inn Express Brussels – Airport	Berkenlaan 6A, 1831 Diegem	<a href="#">Website</a>
Brussels	Hilton Brussels Grand Place	Carrefour de l'Europe 3	<a href="#">Website</a>